

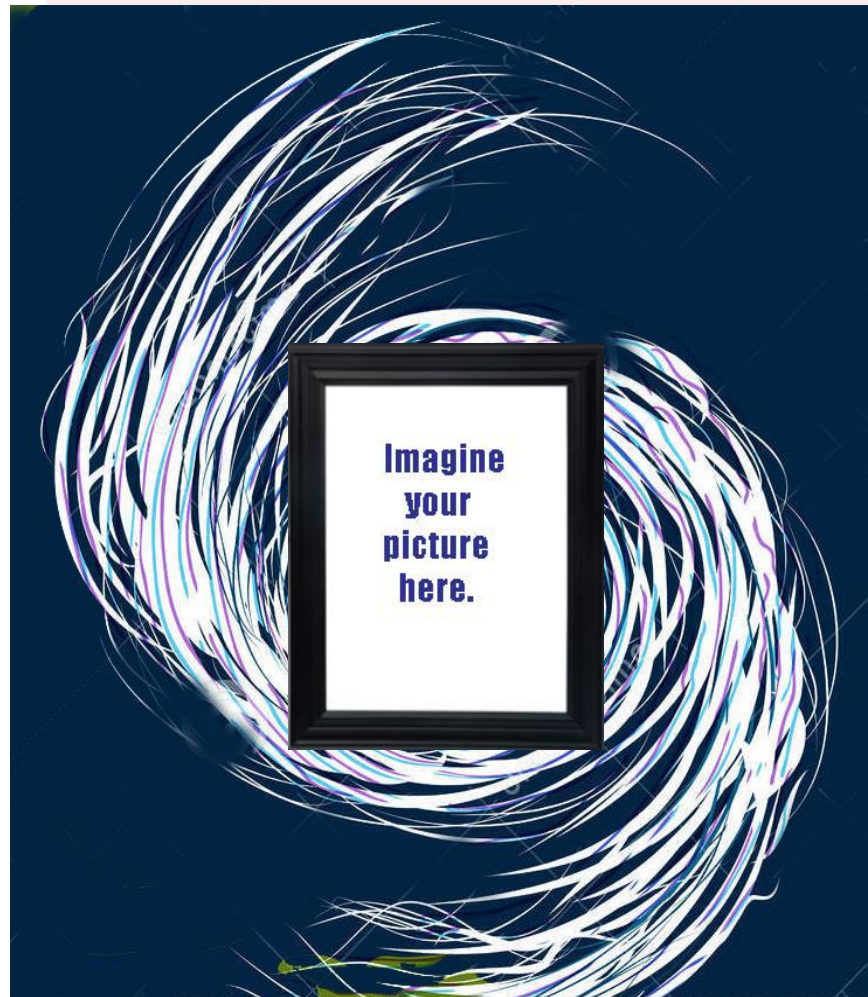


**Get Hurricane Smart
E CURRICULUM!**

**You gotta KNOW the FACTS
so you KNOW how to ACT-
What to DO, What to WATCH,
Where to GO!**

POWER KNOWLEDGE

- 1 Get WEATHER-Smart / Get NHC Smart**
- 2 Get Place-Wise**
- 3 Get STORM SURGE-Smart**
- 4 Get PREP-Ready**
- 5 Get Water Safe!**



Call to Action: Step, Get Ready, Respond!

Step UP, Get READY, RESPOND, right NOW!

Step UP, get READY – We'll show you HOW.

You gotta KNOW the FACTS

so you KNOW how to ACT-

What to DO, what to WATCH,

Where to GO!:



Photo by Kalle

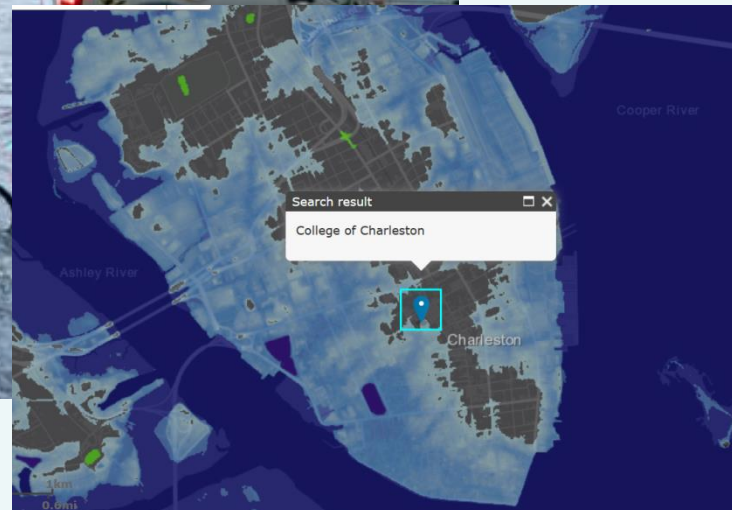
Three Questions

1. What you gotta **NOTICE**?
2. What you gotta **KNOW**?
3. What you gotta **DO** with the **INFO**?

You gotta be **RESILIENT!**
You gotta **SURVIVE!**
Know what to **DO** to keep yourself **ALIVE!**



FLASH FLOOD WATCH



How Hurricane “SMART” are YOU!

Kahoot!



Here's how to find out!

Click on the video link above and follow the directions given by Morningside Middle students.

To practice on your own later, so that you can also become a Weather Ready Ambassador, just click on the Hurricane image here!

If you're a teacher, here's the direct link to the Kahoot test!



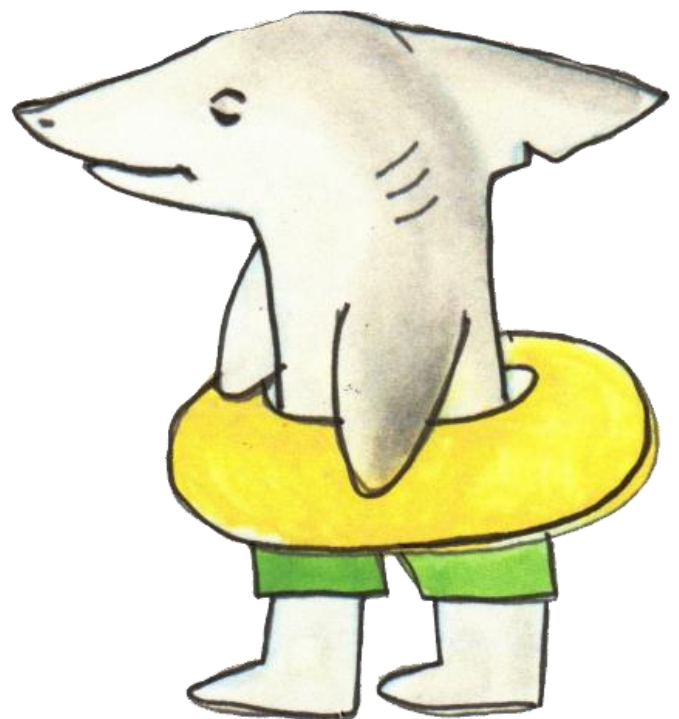
**But what if you did
*NOTHING?***

**What if you thought a
hurricane coming was no
big deal because you've
never experienced one
before?**

**What if you were glad a
storm was coming because
it meant days off school?**

**Then you'd
be exactly
like
Landshark!**

Whatever.





THE KTFR FEATURE FILM!

**Kids
Teaching
Flood
Resilience**

Presents ...



The GET HURRICANE SMART Rap!

Get WEATHER Smart! (Step Up)

You gotta CHECK the WEATHER

THREE TIMES A DAY.

If it's gonna FLOOD, you SHOULDN'T STAY!

**If there's a FLOOD WATCH, you'd better
GET READY;**

**Before you know, it could be
Raining like confetti!**

**In a SURGE WARNING,
be prepared to GO.**

**Get your self OUT
before the water starts to FLOW!**



Image J. Bramblett

HUURICANES are “born” where the ocean is WARM,

**Needing 80 degrees
for a TROPICAL STORM.**

**Low vertical wind shear
and a cluster of storms
Complete the recipe
for these hazards to form!**

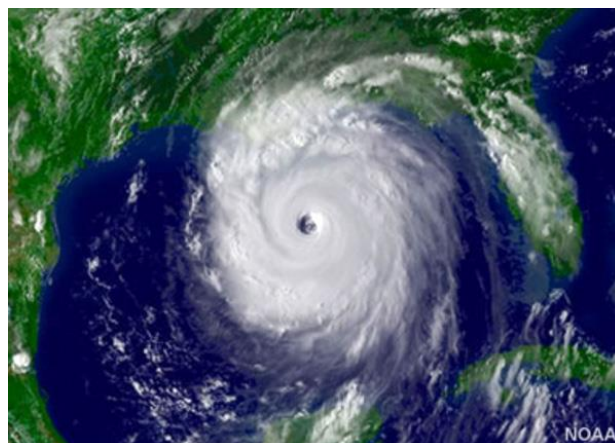


Image NOAA

Get NHC Smart!

You gotta CHECK the WEATHER

AND the NHC.

Tropical Storm Graphics predict what might be.

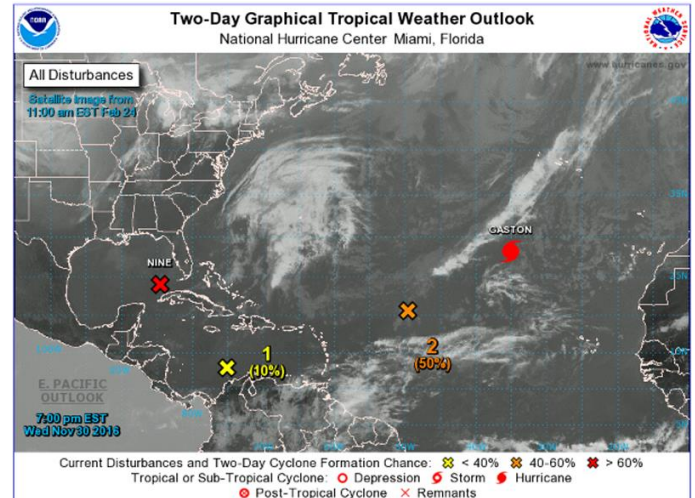
The CONE may be uncertain, but YOU shouldn't be.

Learn to speak "weather" and be READY!

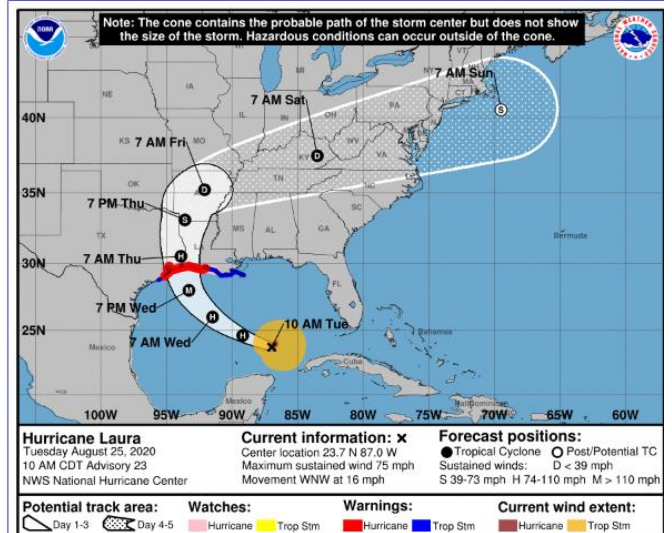
Category 4?

What does THAT mean?

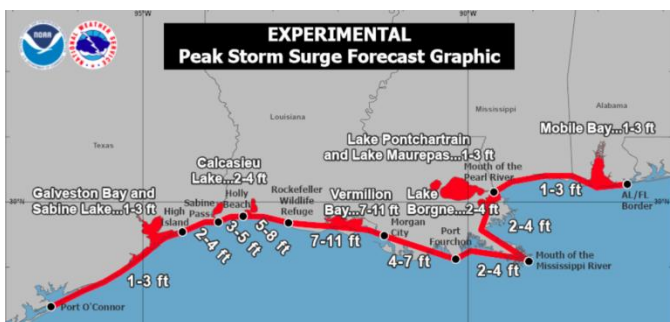
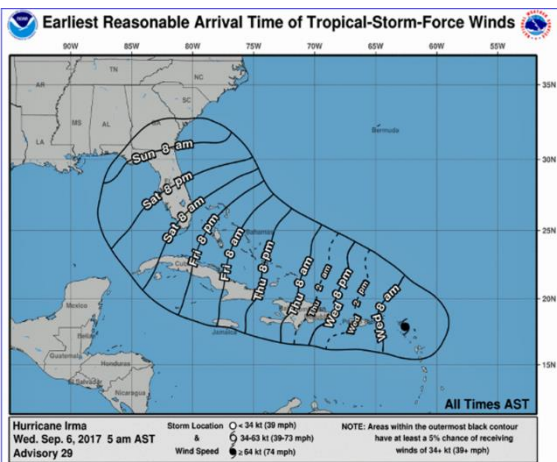
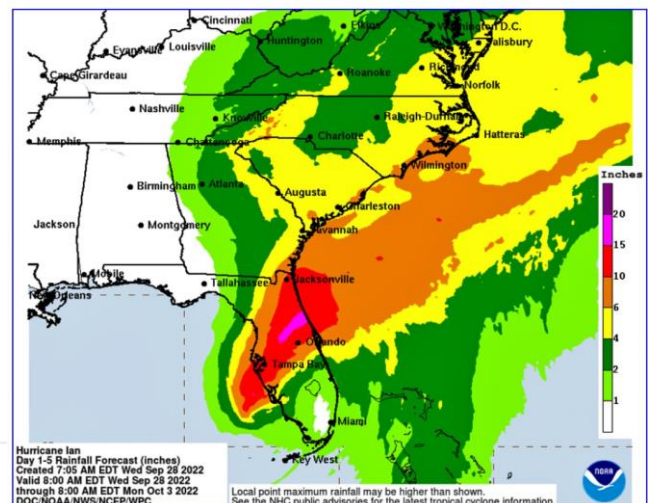
BIG WINDS are coming.
CLEAR THE SCENE!



Tropical Cyclone Track Forecast Cone and Watches/Warnings and Initial Wind Field



U.S. Rainfall Forecast from WPC



What NHC Forecast Graphics Can Tell You..

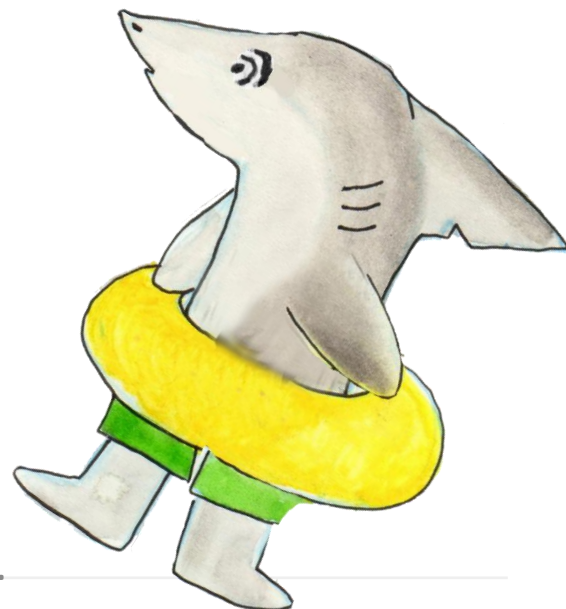
The likelihood that a gathering “disturbance” will become a TROPICAL STORM.

HOW FAST THE HURRICANE IS TRAVELING, WHAT PATH IT’S PREDICTED TO TAKE, & WHERE IT’S PREDICTED TO MAKE LANDFALL.

How much STORM SURGE INUNDATION your community is predicted to experience.

How much RAINFALL is predicted.

When your area might experience TROPICAL STORM FORCE WINDS.

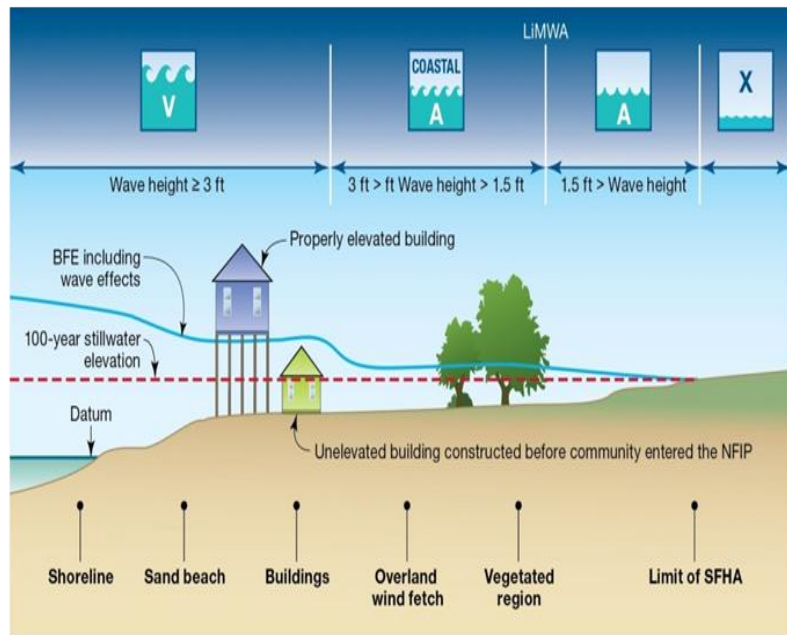


Get PLACE Wise!

You gotta **STEP UP** – and keep the DRAINS CLEAR.



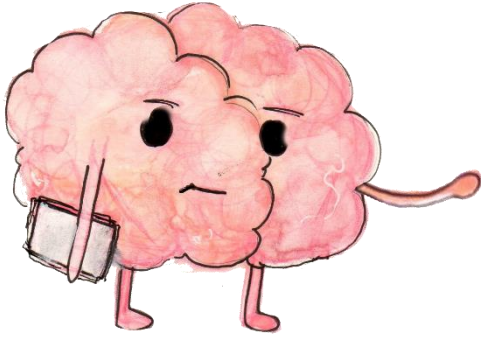
Know your FLOOD ZONE if you're gonna **LIVE HERE**.



A flooded street is **NO** place to wade. Keep yourself from **DROWNING** in a germ parade.



Get PLACE Wise!

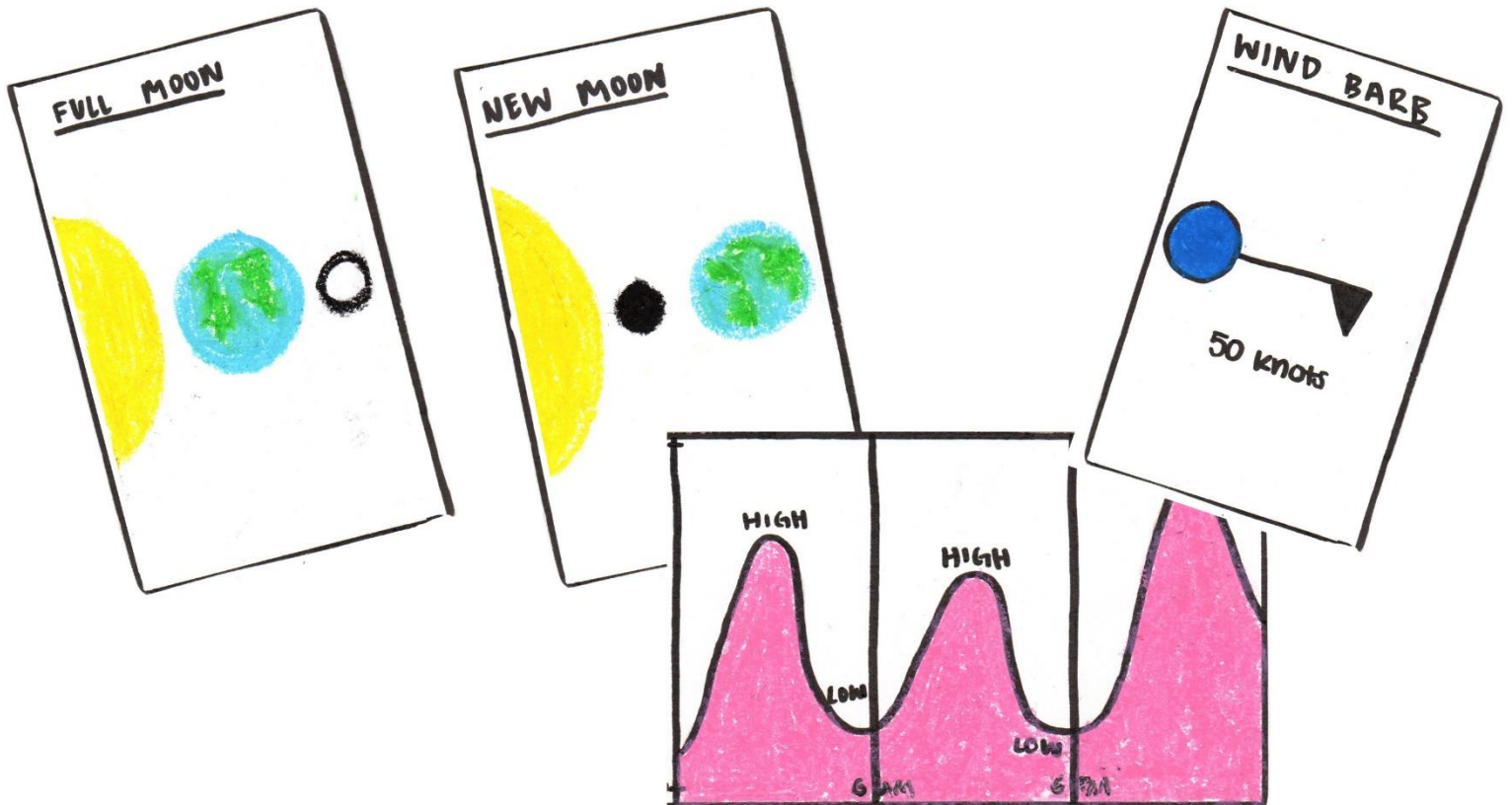


You gotta NOTICE the MOON.

You gotta NOTICE the TIDES.

You gotta be prepared if the waters RISE!

As the MOON moves, it pulls the water, TOO, Making highest TIDES at FULL and NEW.



Get PLACE Wise!

**What's The Story in the land?
Did a creek once flow
where buildings now stand?**



**How does a saltmarsh
give and give,
creating habitat for
animals to live?**



**Fill in a marsh and
soon you'll see,
flooding's a problem
for you and me.**

**Water always wins
if you tell it
NO!
Let Water teach us
where it needs to go.**



Get STORM SURGE Smart!

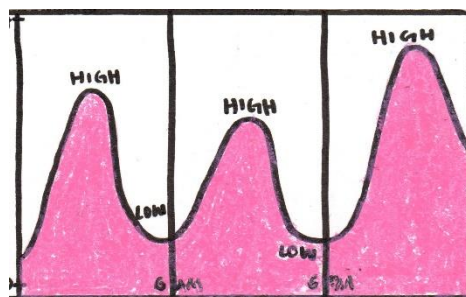
¡Aprende sobre las marejadas ciclónicas!

A WALL OF WATER
may be on its way,
with a FORCE so great,
it could be
YOUR LAST DAY!



TIDE CHARTS, FORECASTS,
LANDMARKS,
APPS –

Gotta check them out
so you don't get TRAPPED!



Find your home
@ this Sea Rise site.
View INUNDATION
at different land heights.



HERE ARE SOME STORM SURGE
SIMULATIONS:

Number 1

Number 2

Number 3

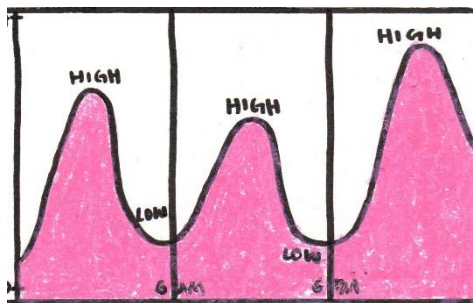
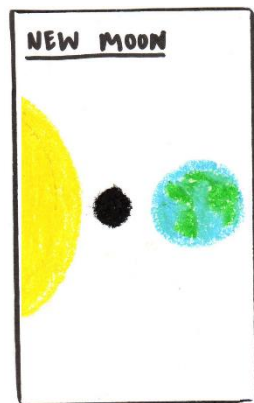
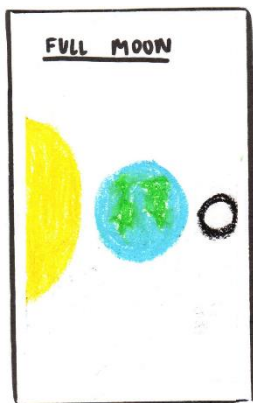
The Big Bad FIVE:

Factors that Compound Storm Surge Severity

1. Increasing wind speeds, indicated by storm CATEGORY 1-5.

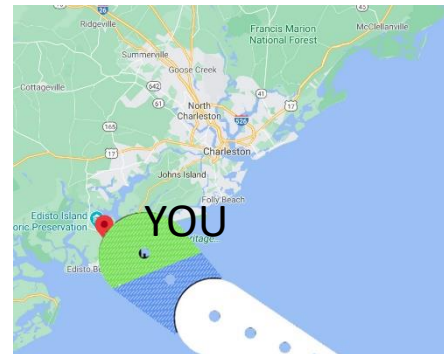


2. FULL or NEW MOON HIGH TIDE



3. Hurricane Landfall perpendicular to the coastline.

4. You are on the right side of the storm, where the wind speeds are greatest.



5. Your home is on A FILLED AND PAVED WETLAND and/or your home is at low elevation above sea level.

HERE'S THE NWS "POTENTIAL STORM SURGE INUNDATION MAP" PRODUCT.

Get PREP READY!

Are you living in a FLOOD PRONE ZONE?
ARE you gonna have to LEAVE your HOME?
Pack a kit and keep it READY!
Don't freak out. STAY STEADY.

Where is the BUS STOP to take you to a SHELTER?
What you gonna DO when we have bad WEATHER?

To avoid a CRISIS, you gotta make a PLAN;
Know what to do and UNDERSTAND.

Use your HEAD.
Know your ROUTE;
And STAY TOGETHER if you have to GET OUT!

You gotta KNOW the FACTS –
So you KNOW how to ACT –
What to DO, what to WATCH,
where to GO!



Get PREP READY!

NEVER say “*WHATEVER*”!

Don't take that 'tude.

Look up, look out.

Start packin' some food.

Fill your water bottles.

Pack your meds.

Bring a little pillow for your head.

Listen to us KIDS.

We KNOW what to DO.

No time to wait,
and we mean YOU!

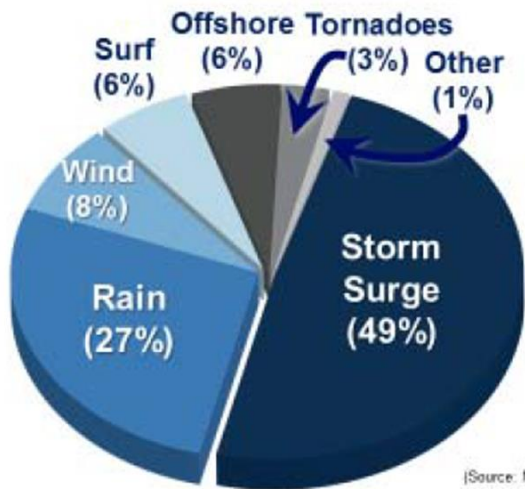


DO YOU KNOW HOW TO SWIM???

The number ONE
cause of deaths
from hurricanes is
**DROWNING FROM
STORM SURGE!**



U.S. Hurricane Fatalities 1963-2012



(Source: NOAA, 2014)



GET WATER SAFE!

Get Water Safe.

Do it for yourself.

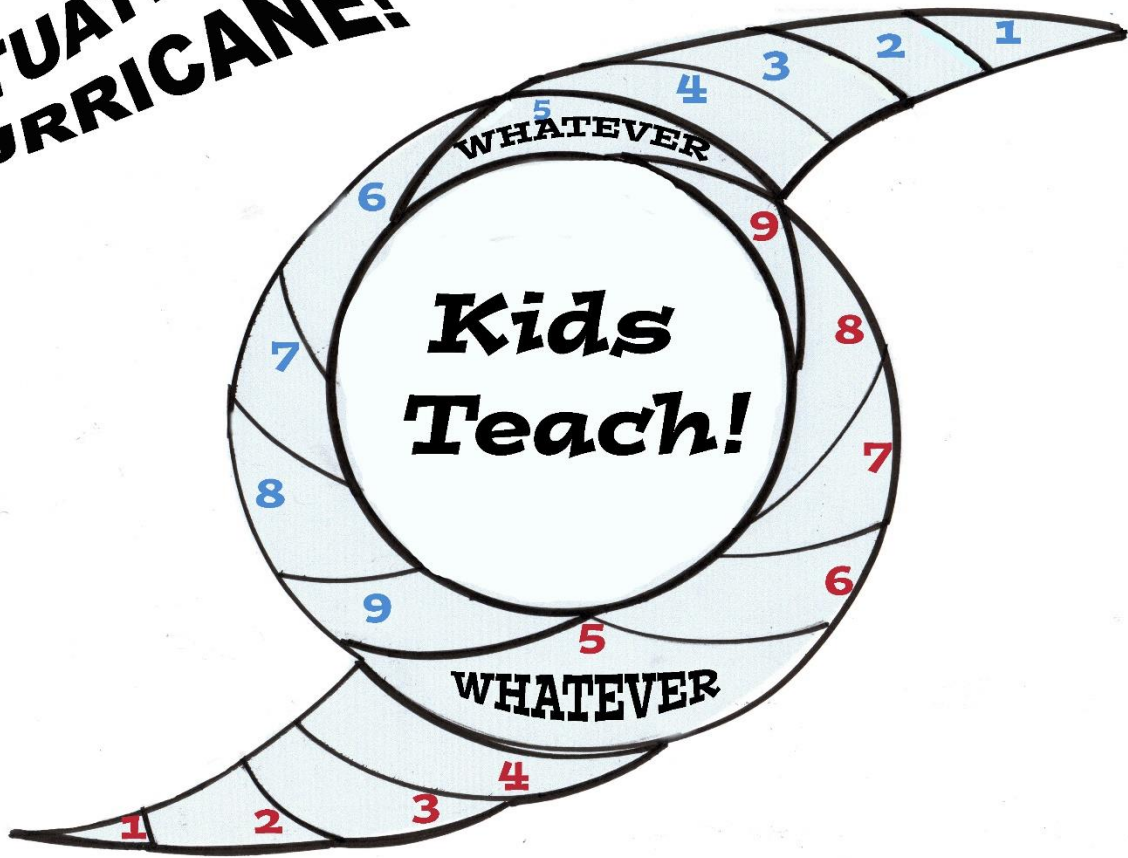
Move in the water

**'Cause it's good for
your health!**



GAME ON!

**SITUATION
HURRICANE!**



Where landing on WHATEVER is the worst move ever!



Hurricane Resilient Citizens Can Find Out and EXPLAIN...

How much time they have to get ready.

What to pack in an emergency kit.

What their evacuation route is.

How to interpret **National Hurricane Center (NCH) Forecast Graphics** so that they know the storm's forward speed and direction, the wind speeds, the predicted landfall location and time, predicted arrival time of tropical storm force winds, and predicted storm surge inundation over the land.

Their **storm surge flood inundation risk** based on 1)the elevation of their home, 2)whether it's built on top of a re-claimed wetland, 3) the moon and tide phase, 4) the storm's wind speed and direction, and 5)whether the hurricane is predicted to arrive to the south of your location.

Why slow-moving storms can create terrible rainfall flooding that can compound storm surge flooding hazards.

What NOT to do when a hurricane is coming!